

pg 296

pg 270

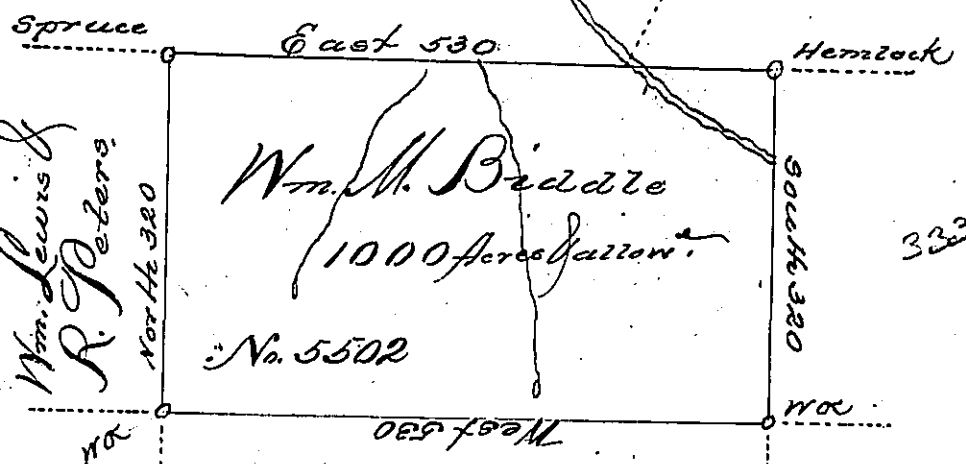
C-115-68

No. 3674

Wm. Lewis & R. Peters

Wm. M. Biddle 5503

Wm. M. Biddle No. 5501



3339 C-65-296

3675 B-439

Wm. Lewis & R. Peters

3336

C-71-18

Surveyed on the 29th day of April 1794 one thousand acres of land with the allowance of six p. Cent Situated in District No. 6, in the late purchase on the East side of the Alleghany River adjoining Wm. M. Biddle No. 5501. By virtue of a warrant to William M. Biddle No. 5502, dated the 5th day of March 1794.

To Daniel Brodhead Esq
 Surveyor General of Pennsylvania

Emmott Williams, Depy Secy

IN TESTIMONY that the above is a copy of the original remaining on file in the Department of Internal Affairs of Pennsylvania, made conformably to an Act of Assembly approved the 16th day of February, 1833, I have hereunto set my Hand and caused the Seal of said Department to be affixed at Harrisburg, this fifth day of January, 1907.

Wm. M. Biddle
 Secretary of Internal Affairs.